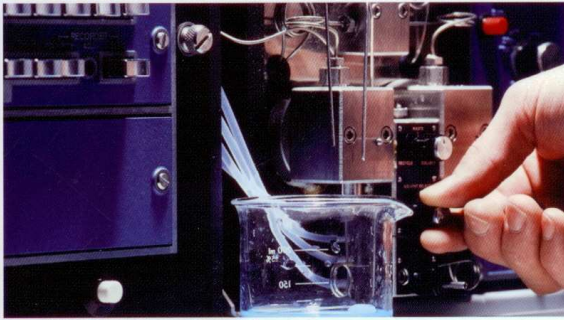
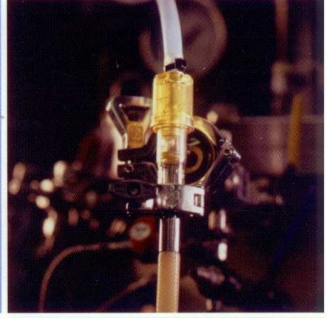


# CPC® STEAM-THRU™ CONNECTIONS





## The Disposable Choice for Multiple Applications

CPC revolutionary Steam-Thru brand of connections are made of polysulfone and meet stringent requirements—USP Class VI, MEM elution, hemolysis in vitro, and USP physicochemical tests. Steam-Thru connections are the product of choice for bioprocessing pilot plant facilities, pharmaceutical production, media manufacturing and cell harvesting applications.



### *CPC Steam-Thru Connection Tested and Proven*

CPC contracted the University of Minnesota Biotechnology Resource Center to conduct a battery of bacterial challenge tests on our Steam-Thru brand of connections. Bacterial contamination introduced into the connection was eliminated during the standard 30-minute steam-through cycle. The University study found no bacterial growth in any of the connections tested in both the steam and flow positions.

#### Features & Benefits

Innovative design	Allows one-step steam-through process Eliminates "dead legs" where bacteria can grow Reduces number of connection points Eliminates need for laminar flow hoods
Disposable	Saves time and money by eliminating unnecessary cleaning procedures Reduces cleaning and validation issues associated with reusable components
Increases capacity	Speeds production cycle
Tear-away sleeve	Prevents accidental actuation Insures seal integrity Provides visual indicator of process stage
Industry standard terminations	Speeds connection to the bioreactor Connects to popular sizes of flexible tubing
3/4" mini and 1 1/2" tri-clamp	Meets industry standard terminations
3/8" and 1/2" hose barbs	Connects to various tubing sizes
Medical grade polysulfone	Compatible with standard sterilization methods



## The Disposable Choice for Multiple Applications

CPC revolutionary Steam-Thru brand of connections are made of polysulfone and meet stringent requirements—USP Class VI, MEM elution, hemolysis in vitro, and USP physicochemical tests. Steam-Thru connections are the product of choice for bioprocessing pilot plant facilities, pharmaceutical production, media manufacturing and cell harvesting applications.



### *CPC Steam-Thru Connection Tested and Proven*

CPC contracted the University of Minnesota Biotechnology Resource Center to conduct a battery of bacterial challenge tests on our Steam-Thru brand of connections. Bacterial contamination introduced into the connection was eliminated during the standard 30-minute steam-through cycle. The University study found no bacterial growth in any of the connections tested in both the steam and flow positions.

#### Features & Benefits

Innovative design	Allows one-step steam-through process Eliminates "dead legs" where bacteria can grow Reduces number of connection points Eliminates need for laminar flow hoods
Disposable	Saves time and money by eliminating unnecessary cleaning procedures Reduces cleaning and validation issues associated with reusable components
Increases capacity	Speeds production cycle
Tear-away sleeve	Prevents accidental actuation Insures seal integrity Provides visual indicator of process stage
Industry standard terminations	Speeds connection to the bioreactor Connects to popular sizes of flexible tubing
3/4" mini and 1 1/2" tri-clamp	Meets industry standard terminations
3/8" and 1/2" hose barbs	Connects to various tubing sizes
Medical grade polysulfone	Compatible with standard sterilization methods

Additional bioprocessing products are available in CPC's *Quick Disconnect Couplings for Bioprocessing Applications* catalog. CPC's *Quick Disconnect Couplings for Medical Device and Equipment* catalog and our *Quick Couplings & Fittings for Plastic Tubing* catalog contain information on additional product lines.

Contact CPC at 1-800-444-2474 today for your free catalog or contact your local distributor.

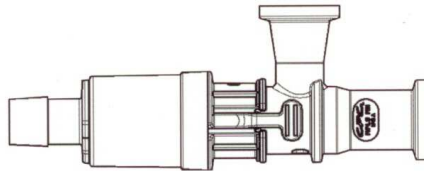
## CPC Steam-Thru™ Brand of Connections Part Numbers and Products

### Polysulfone with Polyethylene Sleeve

PART NO.	TERMINATIONS
STC1700000	3/4" x 3/4" sanitary x 1/2" HB
STC1700100	3/4" x 3/4" sanitary x 3/8" HB
STC1700200	3/4" x 1-1/2" sanitary x 1/2" HB
STC1700300	3/4" x 1-1/2" sanitary x 3/8" HB

### Polysulfone with Polycarbonate Sleeve

PART NO.	TERMINATIONS
STC1700500	3/4" x 3/4" sanitary x 1/2" HB
STC1700600	3/4" x 3/4" sanitary x 3/8" HB
STC1700700	3/4" x 1-1/2" sanitary x 1/2" HB
STC1700800	3/4" x 1-1/2" sanitary x 3/8" HB



## Steam-Thru™ Series Specifications

### Pressure:

Steam position: Up to 30 psi, 2.07 bar

Flow position: Vacuum to 20 psi, 1.38 bar

### Temperature:

Steam position:

Up to 130° C (266° F) for 60 minutes

Flow position:

4° C to 40° C (39° F to 104° F)

### Typical Flow Rate:

Cv = 4.6 max (see graph above)

### Materials:

Connection: Polysulfone, USP Class VI

Seals: Silicone (clear), platinum-cured, USP Class VI

Tear-away seal: Polyethylene and polycarbonate

### Sterilization:

Gamma: Up to 50 kGy gamma irradiation, for one cycle

Autoclave: At 128° C (265° F) for 30 minutes, up to two cycles (applies only to part numbers STC1700500-STC1700800)

SIP process: Up to 130° C (266° F) for 60 minutes

Tubing Sizes: 3/8" and 1/2" ID  
9.5mm and 12.7mm ID

**WARRANTY:** Colder Products Company warrants its products against defects in workmanship and materials a period of 12 months from the date of sale by Colder Products Company to its initial customer (regardless of any subsequent sale of the products). This warranty is void if the product is misused, altered, tampered with or is installed or used in a manner that is inconsistent with Colder Product Company's written recommendations, specifications and/or instructions, or fails to perform due to normal wear and tear. Colder Products Company does not warrant the suitability of the product for any particular application. Determining product application suitability is solely the customer's responsibility. Colder Products Company is not liable for special, indirect, incidental, consequential or other damages including, but not limited to, loss, damage, personal injury, or any other expense directly or indirectly arising from the use of or inability to use its products either separately or in combination with other products. ALL OTHER WARRANTIES EXPRESS OR IMPLIED, WHETHER ORAL, WRITTEN OR IN ANY OTHER FORM, INCLUDING BUT NOT LIMITED TO WARRANTIES OF MERCHANTABILITY OR FITNESS FOR A PARTICULAR PURPOSE, ARE EXPRESSLY EXCLUDED.

The sole and exclusive remedy under this warranty is limited, at the option of Colder Products Company, to replacement of the defective product or an account credit in the amount of the original selling price. All allegedly defective Colder Products Company products must be returned prepaid transportation to Colder Products Company, together with information describing the product's application and performance, unless otherwise authorized in writing by Colder Products Company.



**Colder Products®**

Quick Couplings & Fittings for Plastic Tubing

**Colder Products Company**  
1001 Westgate Drive  
St. Paul, Minnesota 55114  
U.S.A.

Phone: 651-645-0091  
Fax: 651-645-5404  
Toll Free: 1-800-444-2474  
info@colder.com  
[www.colder.com](http://www.colder.com)

**Colder Products Company GmbH**  
Schmalweg 50  
D-55252 Mainz-Kastel  
Germany

Phone: +49-6134-2878-0  
Fax: +49-6134-287828  
Toll Free: 00800 600 50000  
cpcgmbh@colder.com  
[www.colder.com](http://www.colder.com)



**Colder Products Company Asia**  
11A, Vista Court  
La Vista, Discovery Bay  
Hong Kong

Phone: 852-9436-5986  
Fax: 852-2987-2509  
asiapacific@colder.com  
[www.colder.com](http://www.colder.com)

Distributed By:



**Applied Critical Fluids GmbH**

Industriestraße 53 · D-68169 Mannheim  
Tel. 00 49 (0) 621 / 3 09 80 93-0  
Fax 00 49 (0) 621 / 3 09 80 93-0  
E-Mail: wz@acftec.de

[www.acftec.de](http://www.acftec.de)

LICP43 Copyright © 2004

08/04 2000/DG Printed in U.S.A.